

# Rentrée doctorale

10<sup>e</sup> édition

Lille Grand Palais



17 Décembre 2024

14h - 18h

EG  
ENGSYS

EG  
SESAM

EG  
SJPG

ED  
PHF

EG  
BSL

EG  
MADIS

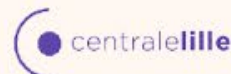
EG  
SHS

EG  
SMRE

Un événement  
organisé par →



En partenariat  
avec →



Avec le  
soutien de →





# Introduction



**Kamal  
Lmimouni**

Director of the  
Doctoral College

# Program

14:00

## Opening of the Doctoral College

Introduction of Bernard Sablonnière , Professeur émérite, University of Lille.

Presentation of the doctoral ecosystem in the region, Kamal Lmimouni , Director of the Doctoral College

The offer of the doctoral college and the not to be missed events, Doctoral college team

Consulid, the doctoral advisors of the Doctoral College, Céline Ouchen , member of the Consulid office

The network of career advisors, Frédéric Luginsland , Administrative Officer of the Doctoral College

The 2024 International Thesis Awards :

Sébastien Sanges - EG BSL

Mailys Mangin - EG SJPG

15:30

## Break

# Program

16:00 to 18:00

## Opening of the Graduate Schools

BSL • salle 2.3 —Biology and Health of Lille

ENGSYS • salle 3.4 —Engineering and Systems Science

MADIS • salle 3.5 —Mathematics, Digital Sciences and their Interactions

SESAM • salle 2.1—Economic, Social, Planning and Management Sciences

SHS • salle 2.2 —Social and Human Sciences

SJPG • salle 3.3 —Legal, Political and Management Sciences

SMRE • salle 3.6 —Sciences of Matter, Radiation and Environment

16:30 to 18:00

A time for discussion  
with the thesis directors  
Amphi Pasteur

18:00

## Networking and stands

Stands : Collège Doctoral · Consulid · Créinnov · Pépite Lille HDF · Maison de la médiation · Maison Internationale  
Euraxess · Les sciences infusent · Service Commun de la Documentation · Xperium · IEEE · Bio Addoct · MGEN · ADSL ·  
MESHS · ADDPL



# Introduction



**Bernard  
Sablonnière**

Professeur Emeritus

Professeur de Biochimie et de Biologie  
moléculaire

Praticien Hospitalier

University of Lille.



# Presentation of the doctoral ecosystem in the region



**Kamal  
Lmimouni**

Director of the  
Doctoral College

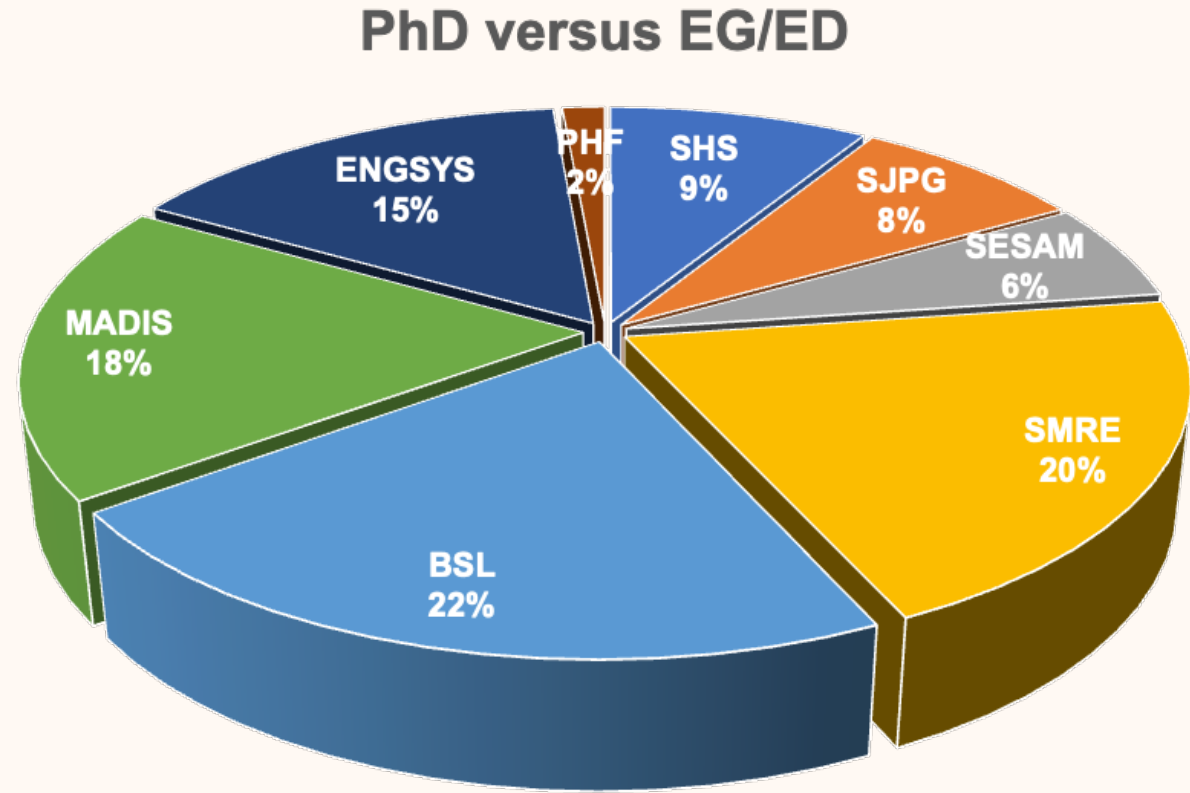


# Start Doc Day

419 PhD

42 Supervisors

58 Doctoral Ecosystem Staff



■ SHS

■ SJPG

■ SESAM

■ SMRE

■ BSL

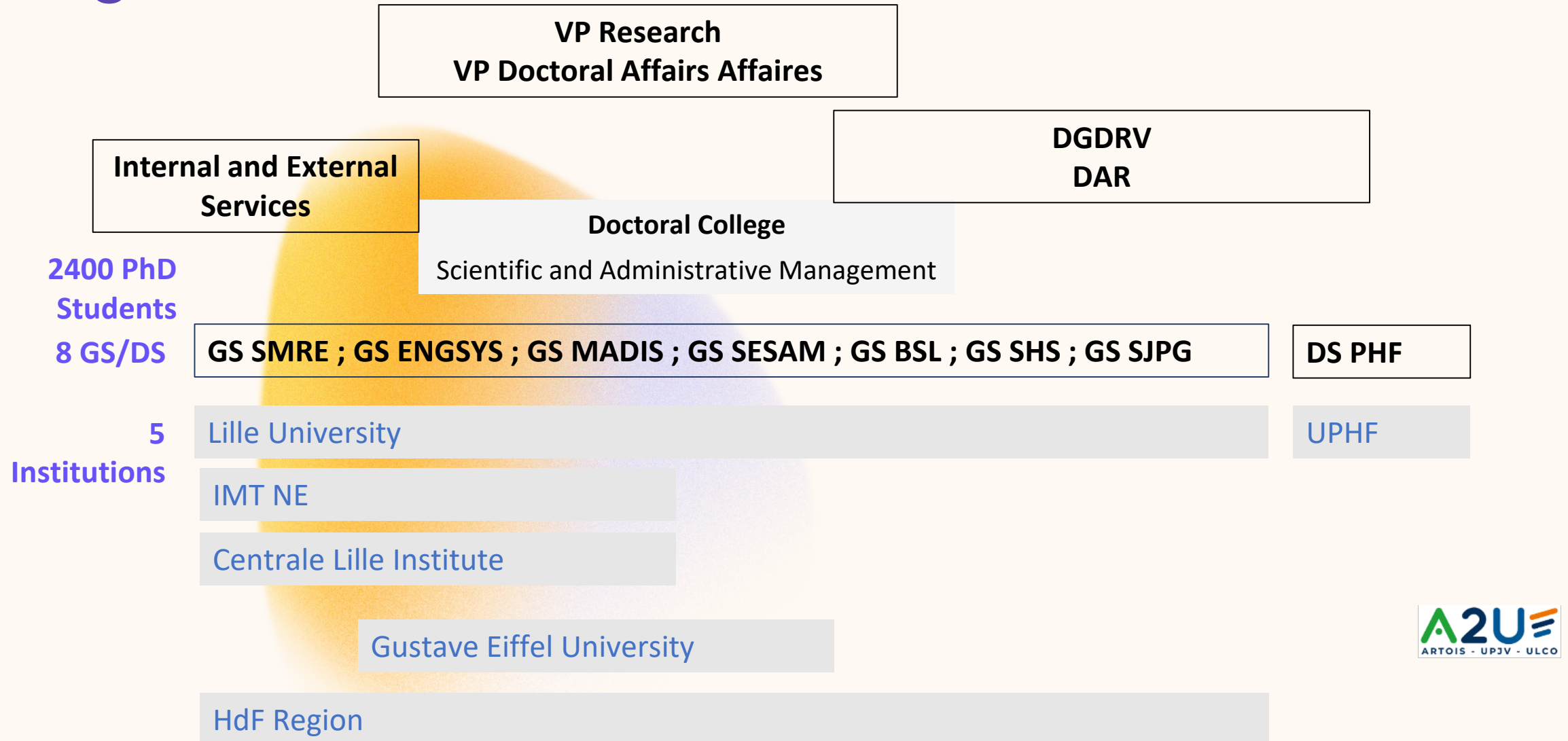
■ MADIS

■ ENGSYS

■ PHF

- 
- Why a PhD ?
  - Doctoral College ?
  - Pursuing Career- After the PhD?
  - How do you want to be supported?

# Organisation





# Direction scientifique



Kamal Lmimouni  
Directeur



Pr. Anahita Basirat  
Directrice adjointe



Pr. Tuami Lasri  
Directeur adjoint

EG  
BSL

Pr. Patrick  
Vermersch

EG  
MADIS

Pr. Ludovic  
Maccaire

ES  
SHS

Pr. Christine  
Hoot-Van  
Cauwenberghe

EG  
SMRE

Pr. Frédéric  
Parol

ES  
ENG SYS

Pr. Henri  
Happy

EG  
SESAM

Pr. Guillemette  
De Larquier

EG  
SJPG

Pr. Johanne  
Saison

EG  
PHF

Pr. Marc  
Duquennoy

# Équipe administrative



Frédéric Luginsland  
Responsable administratif



Amandine Fremaux Detrez  
Assistante formations  
et administrative



Rabah Khabzaoui  
Chargé de mission innovation,  
entrepreneuriat et valorisation



Ambre Lafaux  
Chargée de projet  
COMPEDOC

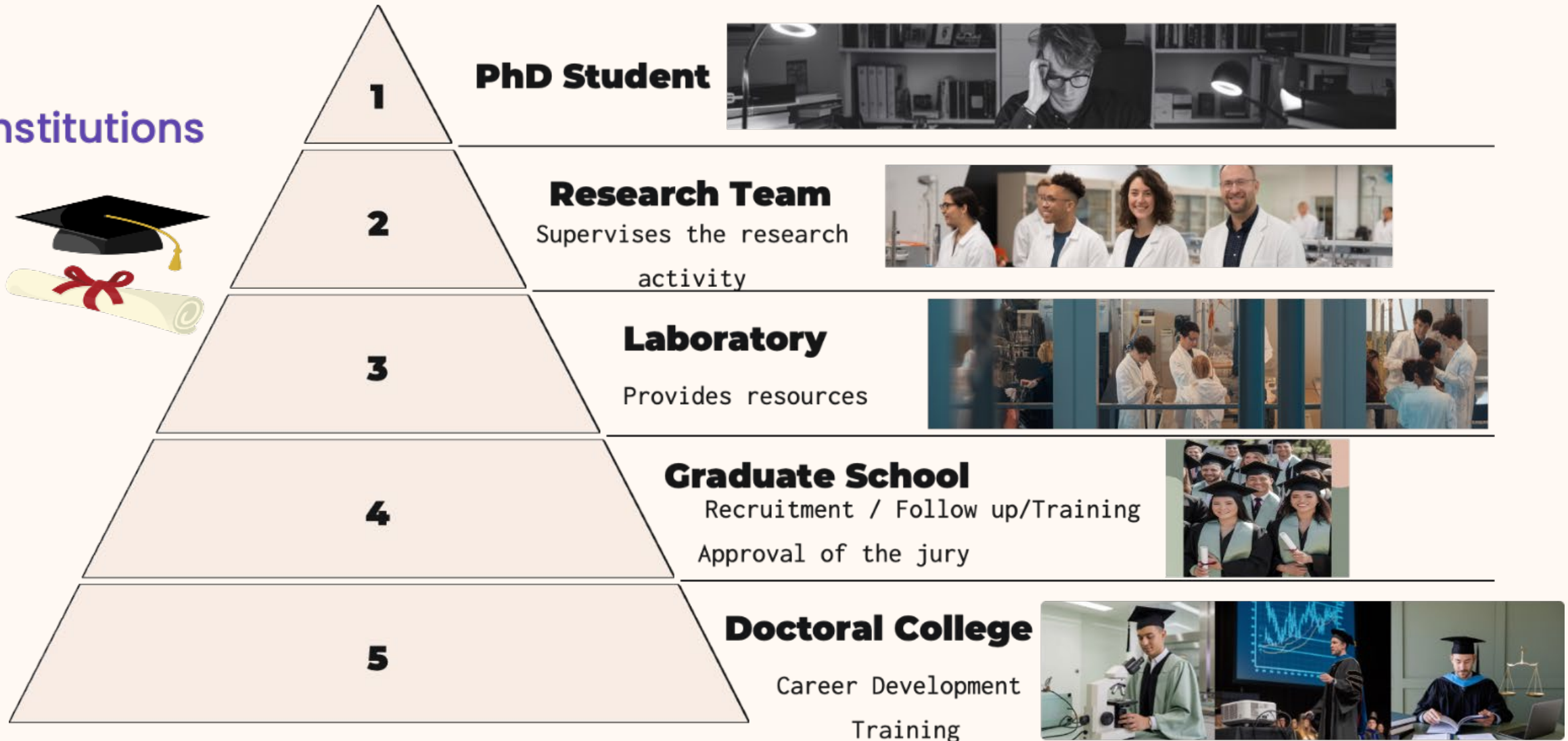


Adelina Stoian  
Chargée de la formation  
doctorale

CONSOLID

# PhD: A multi - layered system

Institutions





# Graduate School - GS

The graduate schools and the Doctoral College organise the training courses of PhD students and prepare them for their postdoctoral careers

## Tasks of the Doctoral School / Graduate School

To ensure the recruitment of PhD students and the monitoring of their progress.

To organise the scientific doctoral courses and the exchanges between PhD students and the scientific community.

To contribute to the european and international opening up of PhD students.

# Doctoral College Missions

The doctoral Schools and the Doctoral College organise the training courses of PhD students and prepare them for their postdoctoral careers..

- Strengthen the interdisciplinary and internationalisation of doctoral training, in addition to the activities of the research units and doctoral schools.
- Prepare PhD students for their future careers, particularly in the non-academic business world, by working to build bridges between the academic world and other socio-economic actors.
- Promoting the doctoral students and doctors in civil society by organising events and meetings with the socio-economic world.



# Partners



# Offers of the Doctoral College and not - to - be missed events

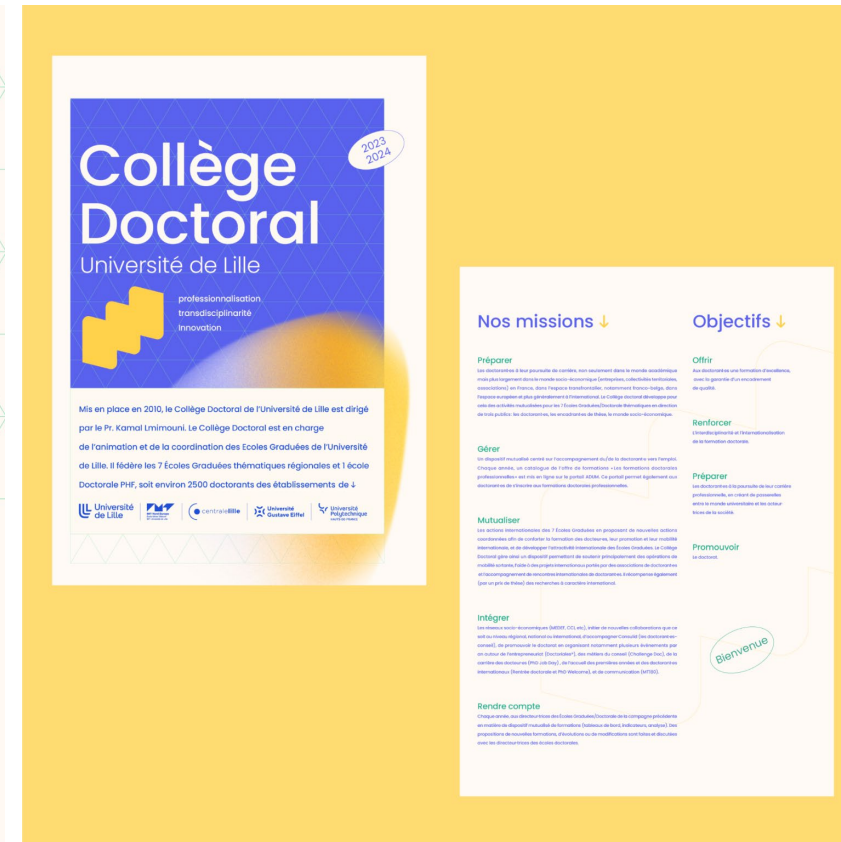
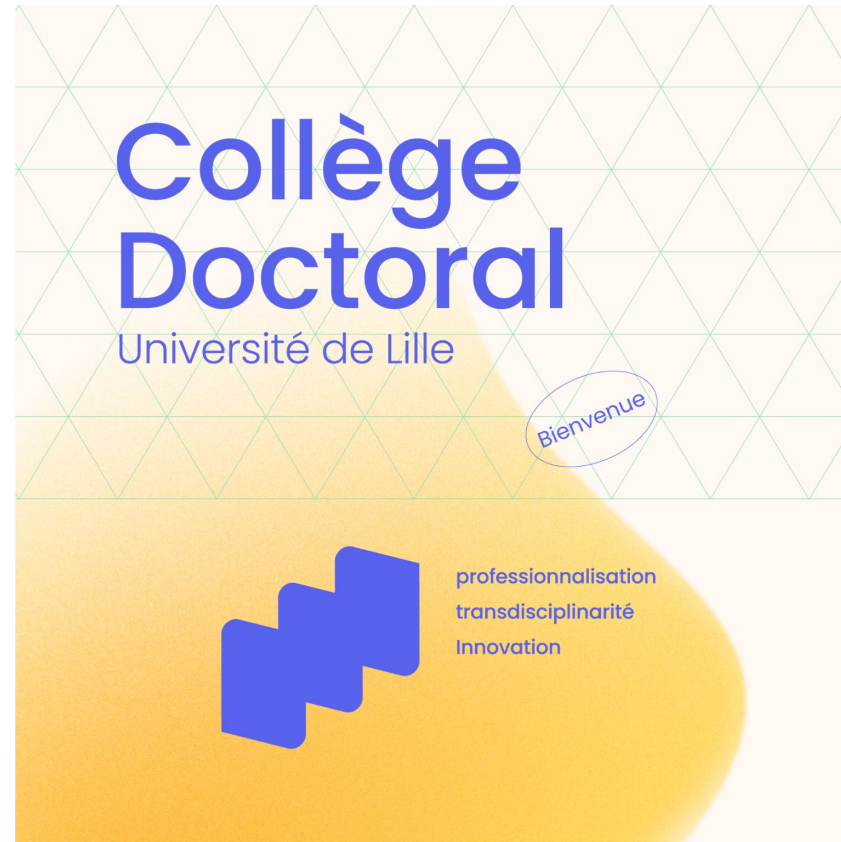
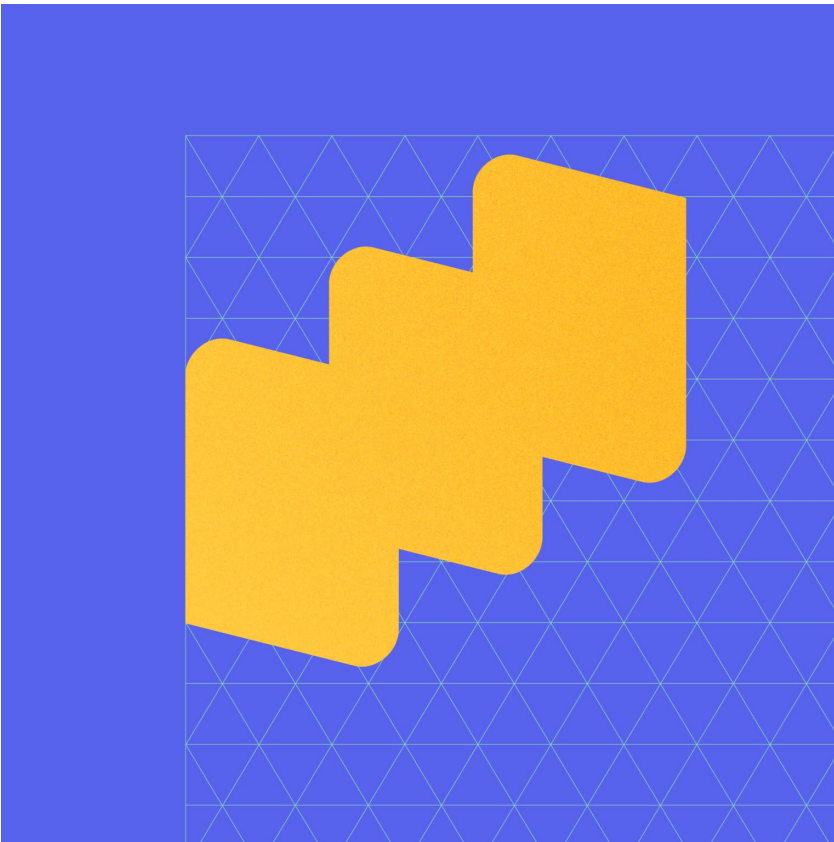


**Team of the  
Doctoral  
College**

Doctoral College



# An identity for the Doctoral College !





# Our actions



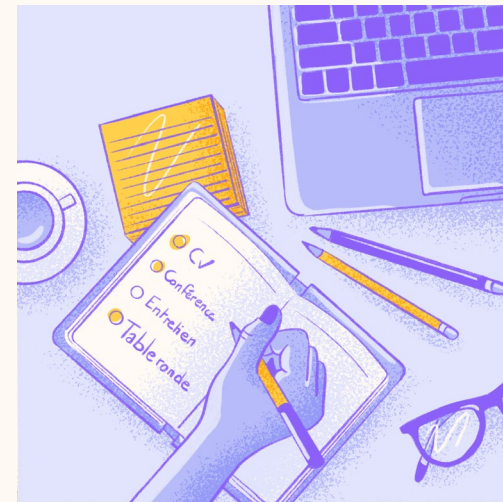
Professional Doctoral courses  
December 2024

With 120 training courses in 2024, the catalogue presents the courses offered by the Doctoral College.



Startdoc  
December 2024

A seminar to help you get off to a good start your thesis, see your doctorate as part of a dynamic professional project and become part of a community of young researchers.



PhD Job Day  
December 2024

The job fair for young talent to boost your career. The event features round tables, conferences and workshops with companies and professionals.



Doc Conseil

The progressive training path dedicated to the consulting professions. In 3 stages, it consists of training, the Consult'Doc / Doc Challenge event and the Consolid system.

Nom du lieu

Un événement  
organisé par →



En partenariat  
avec →



Avec le  
soutien de →



# Our actions



Challenge Doc  
End of 2025

It's 3 days of collaboration between companies and researchers around targeted issues to which innovative solutions can be found!



Ma thèse en 180 secondes  
January - June 2025

Regional and international competition which challenges doctoral students to make scientific research topics accessible to the general public, presented in three minutes.



Doctoriales  
12- 16 May 2025

A 5- day residential seminar to prepare doctoral students to pursue their careers in business.



Compedoc  
Janvier - Mai 2025

Introduction of a skills - based approach for doctoral students. A system that prepares them for career career and enables them to promote their skills in the socio - economic world.

# Feedback on the questionnaire

- Why pursuing a PhD ?
- What next after completing a PhD ?
- How would you like to be supported in your career development ?
- What is the Doctoral College ?



# Trainings of the Doctoral College and not - to - be missed events

## Professional Doctoral courses



## 7 axes :

- career paths
- career plan
- skills development and enhancement
- science and society
- open science
- digital courses
- sustainable development

Un événement organisé par →



En partenariat avec →



Avec le soutien de →



# The summary

## Introduction

- p.2 Édito
- p.3 Présentation de l'offre de formation
- p.6 Charte des formations - Lexique - Informations - Généralités - Focus formations éthique
- p.8 Doctoral Training Program in English
- p.9 Chiffres clés
- p.10 Calendrier 2024 - 2025
- p.156 Contacts
- p.156 RNCP

Formation à destination des encadrantes de thèse  
p.19 Accompagner et encadrer une doctorante

## Axe 1 ↓ Parcours professionnels

### Métiers du conseil

- p.22 Devenir consultante après son doctorat : opportunités et challenges
- p.23 Challenge Doc
- p.24 Consulid

### Entrepreneuriat

#### Fonctionnement de l'entreprise ↓

- p.26 Connaissance des entreprises et des organisations
- p.27 Know the companies and organizations
- p.28 Jeunes chercheur-euses, initiez-vous à l'entreprise !

#### Initiation à l'entreprise ↓

- p.29 Entrepreneuriat, pourquoi pas ?
- p.30 Construire un projet entrepreneurial
- p.31 S'orienter pour créer une entreprise
- p.32 Doctoriales\*

### Enseignement

- p.34 Connaissance de l'université
- p.35 Le métier d'enseignant-e-chercheur-euse
- p.36 Déontologie des enseignant-e-s du supérieur
- p.37 Organiser et développer ses enseignements dans le supérieur
- p.38 Développer ses compétences pédagogiques en analysant ses propres pratiques
- p.39 Préparer un oral pédagogique
- p.40 Communiquer efficacement avec les outils adaptés dans ses enseignements !
- p.41 Animer des petits et grands groupes dans l'enseignement supérieur
- p.42 Hybridation: Comment utiliser la complémentarité entre présence et distance ?
- p.43 Utiliser les plateformes de formation à distance

## Axe 2 ↓

## Projet professionnel

### Démarche compétence

- p.46 Compedoc - Portfolio de compétences
- p.47 Compedoc - Atelier 1 - Communiquer et argumenter ses compétences dans le cadre d'un projet professionnel
- p.47 Compedoc - Atelier 2 - Construire un projet professionnel ancré dans les réalités du marché
- p.48 Compedoc - Atelier 3 - Élaborer des outils de communication : CV et profil réseaux sociaux
- p.49 Définir et formuler son projet professionnel
- p.50 Define and formulate your professional project
- p.51 Boost your digital identity and use of social media
- p.52 Construire et optimiser son CV
- p.53 Building and optimizing your CV

### Marché de l'emploi

- p.55 Atelier Apec - Travailler à l'international
- p.56 Les carrières hors académiques dans les trois fonctions publiques
- p.57 Organisation et fonctionnement du milieu ONG
- p.58 Droit du travail dans le secteur privé
- p.59 PhD's and international career

### Recherche d'emploi

- p.61 Atelier Apec - Les réseaux sociaux professionnels: comment en faire bon usage ?
- p.62 Atelier Apec - Oser faire du réseau
- p.63 Atelier Apec - L'entretien de recrutement : maîtrisez les clés pour réussir vos entretiens
- p.64 Atelier Apec - Recruitment Interview: Master the Keys to Succeed in Your Interviews
- p.65 Atelier Apec - Parler rémunération en entretien: des repères pour réussir
- p.66 Atelier APEC - Réussir son entretien de recrutement en auditant la marque employeur
- p.67 PhD, define and optimize your strategy to find a job
- p.68 Préparer sa mobilité à l'international
- p.69 Apply for international
- p.70 L'entretien de recrutement : préparation et mise en situation
- p.71 Vendre sa thèse face à un recruteur
- p.72 Marketing your thesis to a recruiter
- p.73 Atelier APEC - Comment valoriser votre doctorat. Transformez vos compétences en atouts pour le secteur privé

## Axe 3 ↓

## Développement et valorisation des compétences

### Communication

- p.76 La voix comme outil de communication
- p.77 Améliorer son aisance à l'oral grâce aux approches théâtrales
- p.78 Comment se créer un réseau et initier des partenariats

### Management

- p.80 Le leadership au féminin
- p.81 Les fondamentaux du management d'équipe
- p.82 The fundamentals of team management

### Gestion de projet

- p.84 Mener sa thèse en mode projet
- p.85 Conduct my PhD in project mode
- p.86 Gagner du temps en optimisant ses méthodes de lecture
- p.87 Aspects financiers du montage de projet
- p.88 Financement de la recherche sur projet
- p.89 Fondamentaux de la propriété intellectuelle
- p.92 Intelligence économique et dynamique de l'innovation
- p.93 Economic intelligence and innovation dynamics
- p.94 Sécurité Economique et Protection du Potentiel Scientifique et Technique

### Relations professionnelles

- p.96 Animer une réunion
- p.97 Lead a meeting
- p.98 Organiser et réussir sa thèse tout en communiquant efficacement avec son-sa directeur-riche de thèse
- p.99 Organize and complete your doctorate while communicating effectively with your supervisor
- p.100 Gestion du temps et du stress
- p.101 Gestion des conflits
- p.102 Conflict management
- p.103 Formation aux compétences interculturelles en milieu professionnel
- p.104 Development of intercultural competence in a professional setting
- p.105 Cercle de mentorat

## Axe 4 ↓

## Science et société

- p.109 Entraînement à «Ma thèse en 180 secondes»
- p.110 Talk Like Ted - The Art of Public Speaking
- p.111 Introduction à la médiation scientifique : Le parti pris du Forum des Sciences
- p.112 Pratique de la médiation scientifique
- p.115 Initiation à la recherche participative
- p.116 Esprit critique et recherche scientifique
- p.117 Critical Thinking and Scientific Research
- p.118 Communiquer sa recherche auprès du grand public
- p.119 Transformer votre recherche en projet au service des enjeux de la société
- p.120 Les violences morales et sexuelles : prévenir, agir et connaître les spécificités de l'ESR

## Axe 5 ↓

## Science Ouverte

### Éléments généraux et juridiques

- p.125 Introduction: Qu'est-ce que la Science Ouverte?
- p.125 Introduction: What is Open Science?
- p.126 Science ouverte: quel cadre juridique? Droit d'auteur et licences
- p.126 Science ouverte & Financement de la recherche

### Rédiger et diffuser sa thèse

- p.127 Veille et stratégie de recherche documentaire
- p.128 Retrieving and monitoring scientific information and literature
- p.128 Zotero
- p.129 Zotero - English
- p.130 Circuit de la thèse
- p.130 Deposit and disseminate your thesis

### Publier et diffuser ses travaux

- p.131 Diffuser ses travaux scientifiques: édition et autres formes de communication scientifique
- p.132 Disseminating scientific work: publishing and other forms of scientific communication
- p.132 Publication et intégrité scientifique
- p.133 Publier en accès ouvert : comment faire ?
- p.133 Les archives ouvertes : connaître les plateformes et déposer ses travaux

### Rendre visibles ses travaux

- p.134 Introduction. Rendre visibles ses travaux: pourquoi, comment ?
- p.135 Increasing your work's visibility: Why and how?
- p.135 Utiliser les identifiants chercheurs pour publier et diffuser ses travaux
- p.136 Construire son identité numérique en tant que jeune chercheur-euse
- p.136 Intérêts et limites de la bibliométrie

### Données, codes et logiciels

- p.138 Introduction : Comprendre l'écosystème des données
- p.138 Understanding the data ecosystem
- p.139 Comment gérer ses données de recherche: bonnes pratiques et conseils
- p.139 Explorer, harmoniser, nettoyer et transformer ses données avec OpenRefine
- p.140 Réutiliser des données: chercher et citer
- p.140 Gérer, préserver et diffuser ses codes et logiciels

## Axe 6 ↓

## Formations numériques

- p.143 Composition efficace du mémoire de thèse avec LaTeX Débutantes et grandes débutantes
- p.144 Composition efficace du mémoire de thèse avec LaTeX Avancé
- p.145 Initiation opérationnelle à LaTeX
- p.146 Creating Professional-Looking Academic Documents with LaTeX
- p.147 Analyse de données avec le logiciel R
- p.148 Première initiation à l'usage de R en Sciences Humaines et Sociales
- p.149 Constitution et analyse d'un corpus documentaire à partir d'istex

## Axe 7 ↓

## Développement durable

- p.152 Enjeux environnementaux et soutenabilité dans les pratiques de recherche
- p.153 Fresque du climat
- p.154 Fresque du numérique
- p.155 Ma Terre en 180 minutes
- p.156 Sensibilisation à l'innovation responsable : Introduction à la pensée Cycle de Vie
- p.157 Évaluation de l'empreinte environnementale des procédés et des produits : formation à la méthodologie d'Analyse du Cycle de Vie (ACV)

Un événement  
organisé par →



En partenariat  
avec →



Avec le  
soutien de →





26 trainings in english

# Professional Doctoral Training in English

<b>Entrepreneurship</b>		
p.27	Knowledge of companies and organizations	17 January 2025
<b>Professional Project Skills Approach</b>		
p.50	Define and formulate your professional project	8 and 9 January 2025
p.51	Boost your digital identity and use of social media	23 and 24 April 2025
p.53	Building and optimizing your CV	5 February 2025
<b>Job Market</b>		
p.58	PhD's and International Career	26 February 2025
<b>Job Search</b>		
APEC Workshop : Recruitment Interview.		
p.64	Master the Keys to Succeed in Your Interviews	26 February 2025
p.67	PhD, define and optimize your strategy to find a job	3 and 24 April 2025
p.69	Apply for international	20 May 2025
p.72	Marketing your thesis to a recruiter	6 June 2025
<b>Skills Development</b>		
<b>Management</b>		
p.82	The fundamentals of team Management	10 and 11 March 2025
<b>Project Management</b>		
p.85	Conduct my PhD in project mode	2 June 2025 and 24 June 2025 AM
p.93	Economic intelligence and innovation dynamics	27 and 28 March 2025
<b>Professional Relationships</b>		
p.97	Lead a meeting	28 February 2025
p.99	Organize and complete your doctorate while communicating effectively with your supervisor	24 March 2025 and 25 March 2025 AM
p.102	Conflict management	7 February 2025
p.104	Development of intercultural competence in a professional setting	17 and 18 June 2025
<b>Science and Society</b>		
p.110	Talk Like Ted/The Art of Public Speaking	18 March 2025, 1, 8, 15, 22, 29 April 2025, 6, 27 May 2025, 2 June 2025 (Jury)
p.117	Critical Thinking	30 april 2025
<b>Open Science</b>		
p.125	Introduction: What is Open Science?	12 December 2024 AM
p.128	Retrieving and monitoring scientific information and literature	Session 1: 26 November 2024 PM Session 2: 7 January 2025 PM
p.129	Zotero - English	1 April 2025 AM
p.130	Depositing and disseminating your thesis	28 January 2025 AM
p.132	Disseminating scientific work: publishing and other forms of scientific communication	25 March 2025 AM
p.135	Increasing your work's visibility. Why and how?	6 February 2025 AM
p.138	Understanding the data ecosystem	18 December 2024 AM
<b>Digital trainings</b>		
p.146	Creating Professional Looking Academic Documents with LaTeX	20, 21, 22 May and 2, 3 June 2025

120 trainings to discover

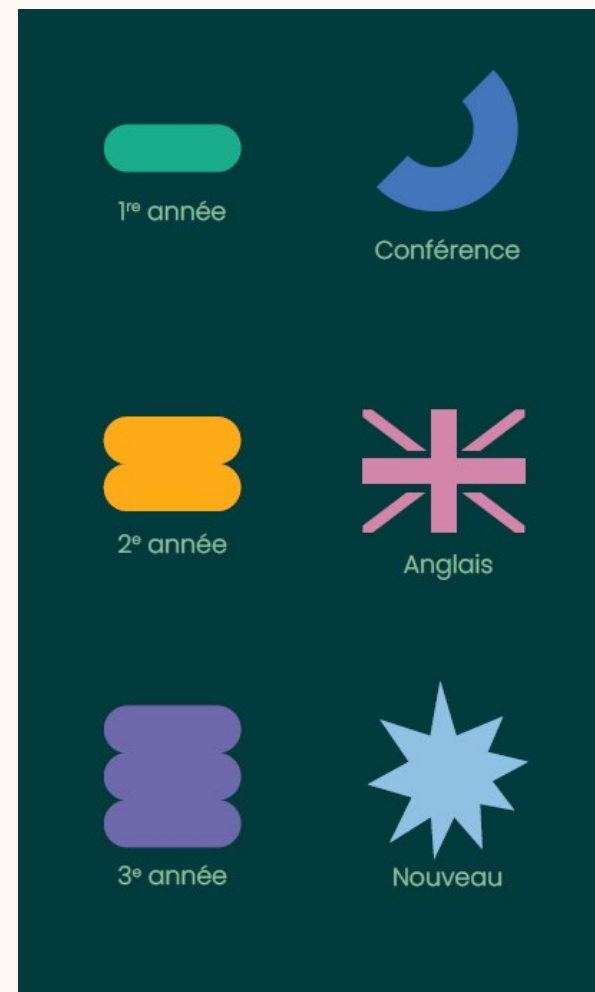


## A calendar and a summary

# Axe 4 → Science et société

Entraînement à «Ma thèse en 180 secondes» B5.1 B5.3	Réunion d'information (visio) → 28 Nov 2025 S1-13 et 27 Jan 2025 S2-16 et 30 Jan 2025 S3-20 Jan et 3 Fév 2025 2J	—	p.109
Talk Like Ted – The Art of Public Speaking B5.1 B5.2 B5.3	18 Mars 2025 1-8-15-22-29 Avr 2025 6-27 Mai 2025 Récitation-2 Juin 2025 2.5J	✱ —	p.110
Introduction à la médiation scientifique: Le parti pris du Forum des Sciences B5.1 B5.2 B5.3	20 Jan et 21 Jan AM 2025 1.5J	—	p.111
Pratique de la médiation scientifique B5.1 B5.2 B5.3	tout au long de l'année	—	p.112
Initiation à la recherche participative B4.3 B6.1	14 Jan et 7 Fév 2025 2J	—	p.115
Esprit critique et recherche scientifique B2.3 B4.1 B4.2 B4.5	29 Avr 2025 1J	—	p.116
Critical Thinking and Scientific Research B5.1 B5.2 B5.3	30 Avr 2025 1J	✱ —	p.117
Communiquer sa recherche auprès du grand public B3.1 B3.2 B3.4 B3.5 B5.1 B5.2 B5.3 B7.1 B7.2 B7.3 B7.4 B7.5	27 et 28 Jan 2025 2J	—	p.118
Transformer votre recherche en projet au service des enjeux de la société B1.4 B7.2 B7.3 B7.4 B7.5	23 et 24 Jan 2025 2J	✱ —	p.119
Les violences morales et sexuelles : prévenir, agir et connaître les spécificités de l'ESR B7.5	5 Déc AM 2024 0.5J	—	p.120

## Guides all along



## RNCP disponibles

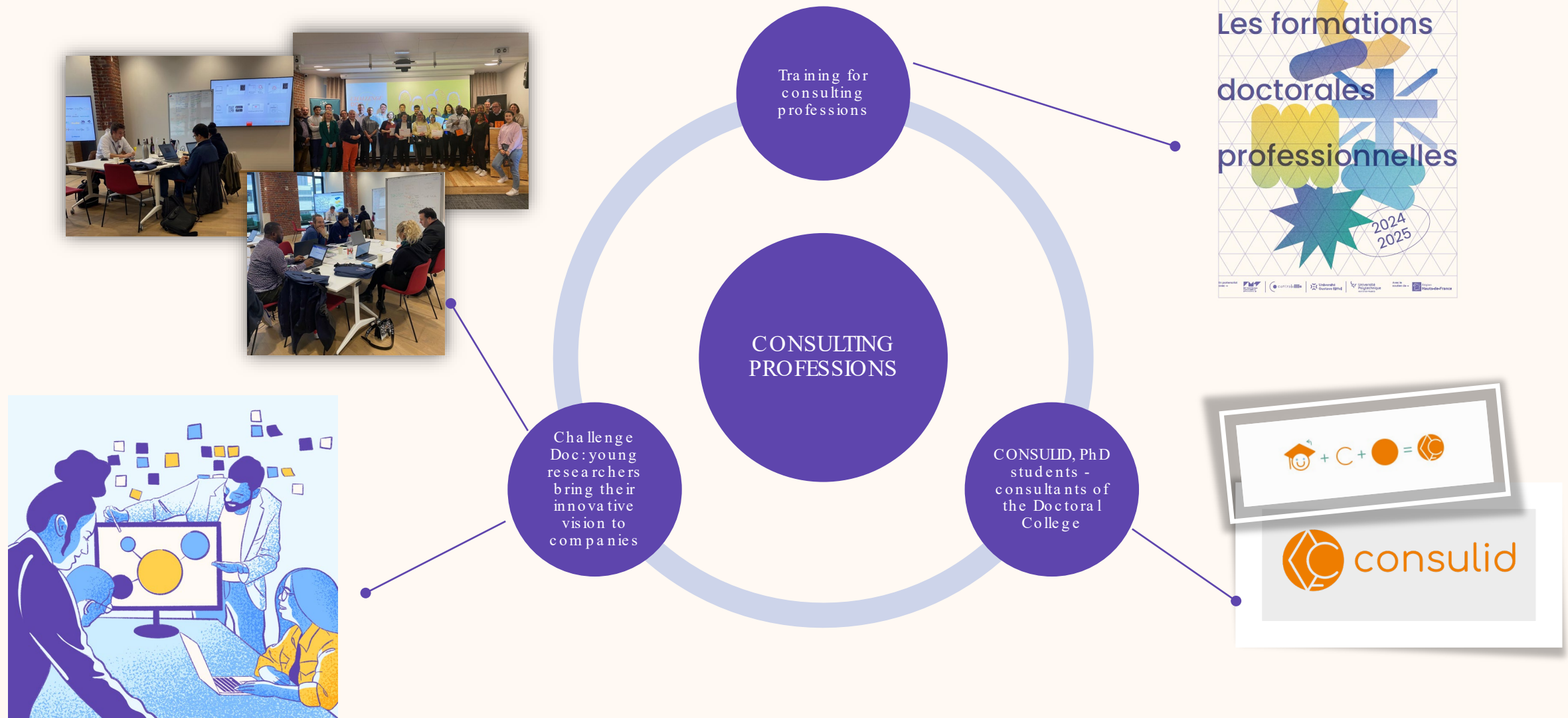
### B1 ↓

#### Conception et élaboration d'une démarche de recherche et développement, d'études et prospective

- B1.1 Disposer expertise scientifique tant générale que spécifique d'un domaine de recherche et de travail déterminé.
- B1.2 Faire le point sur l'état et les limites des savoirs au sein d'un secteur d'activité déterminé, aux échelles locale, nationale et internationale.
- B1.3 Identifier et résoudre des problèmes complexes et nouveaux impliquant une pluralité de domaines, en mobilisant les connaissances et les savoir-faire les plus avancés.
- B1.4 Identifier les possibilités de ruptures conceptuelles et concevoir des axes d'innovation pour un secteur professionnel.
- B1.5 Apporter des contributions novatrices dans le cadre d'échanges de haut niveau, et dans des contextes internationaux.
- B1.6 S'adapter en permanence aux nécessités de recherche et d'innovation au sein d'un secteur professionnel.



# Not - to - be missed events



# Not - to - be missed events



Why ?

Innovation and professionalization challenge  
Scientific communication  
Company strategy  
Professional meetings

What is Doctoriales's event ?  
Residential seminar  
5 days  
Work in multidisciplinary teams  
Business creation exercise

**Doctoriales®**  
Hauts de France

Entrepreneurship

12 to 16 May 2025





# Not - to - be missed events

## Communication

### My thesis in 180 secondes

Scientific communication and mediation  
3 training sessions  
1 competition



### Talk Like Ted

1 training session and a pitch



### Practice of scientific mediation

theoretical training in scientific mediation  
+10 workshops (SchoolLab, Fête de la Science,...)



# Compedoc (Doctoral competency - based approach)

Compedoc aims to help you identify and highlight your skills while preparing for life after your doctoral studies. It includes:

- **Creating a skills portfolio** : Developing a personal portfolio that showcases your skills and experiences.
- **Learning to value your skills** : Understanding how to recognize, present, and leverage personal competencies in various contexts.
- **Preparing for the expectations of the professional world** : Gaining insight into what employers and academic institutions look for and how to meet those expectations.
- **Deepening reflection on your professional project** : Taking time to critically assess and refine your career goals and plans for the future.

Register now on your ADUM account or contact the Doctoral College!

## How

- ❖ Personalized support from a career path advisor who guides you
- ❖ 3 workshops to help you communicate and argue your skills, build your professional project and create communication tools
- ❖ Additional ressources (videos, thematic sheets, etc.)



## Friday, 10<sup>th</sup> January (09h00 - 13h00)

- ★ Lilliad Learning Center Innovation
- ★ Details of the Compedoc program (including modalities and schedule)
- ★ Roundtable discussion on possible career paths after a PhD.



# Entrepreneurship & Research valorization

## Pôle Universitaire d'Innovation Lille

Strengthen bridges between the academic and socio - economic worlds.

Main goals :

- Develop innovatives ideas
- Support PhD students in their entrepreneurial projects.
- Train and raise awareness in entrepreneurship.

**PUI**  
**LILLE**

PÔLE UNIVERSITAIRE  
D'INNOVATION

## New course - *Transformer votre recherche en projet répondant aux enjeux de la société*

- Reflect on the societal impact of your research
- Find and develop new ideas (design thinking)

Course schedule : 23/01/2025 & 24/01/2025

Register now on your  
ADUM account or contact  
the Doctoral College!

# Entrepreneurship & Research valorization

## New course program - *Entrepreneuriat, pourquoi pas ?*

- What ? 8 lectures, workshops and seminars in the catalogue
- Why ? Explore entrepreneurial potential of your research.
- Who ? Phd Student with or without a entrepreneurial project
- When ? 2025 : First semester

Save the date  
Informative webinar :  
January 16th - 13h-13h30

## Challenge Starthèse 2025

- Set up by PUI Lille
- Ideas contest : find and pitch your idea

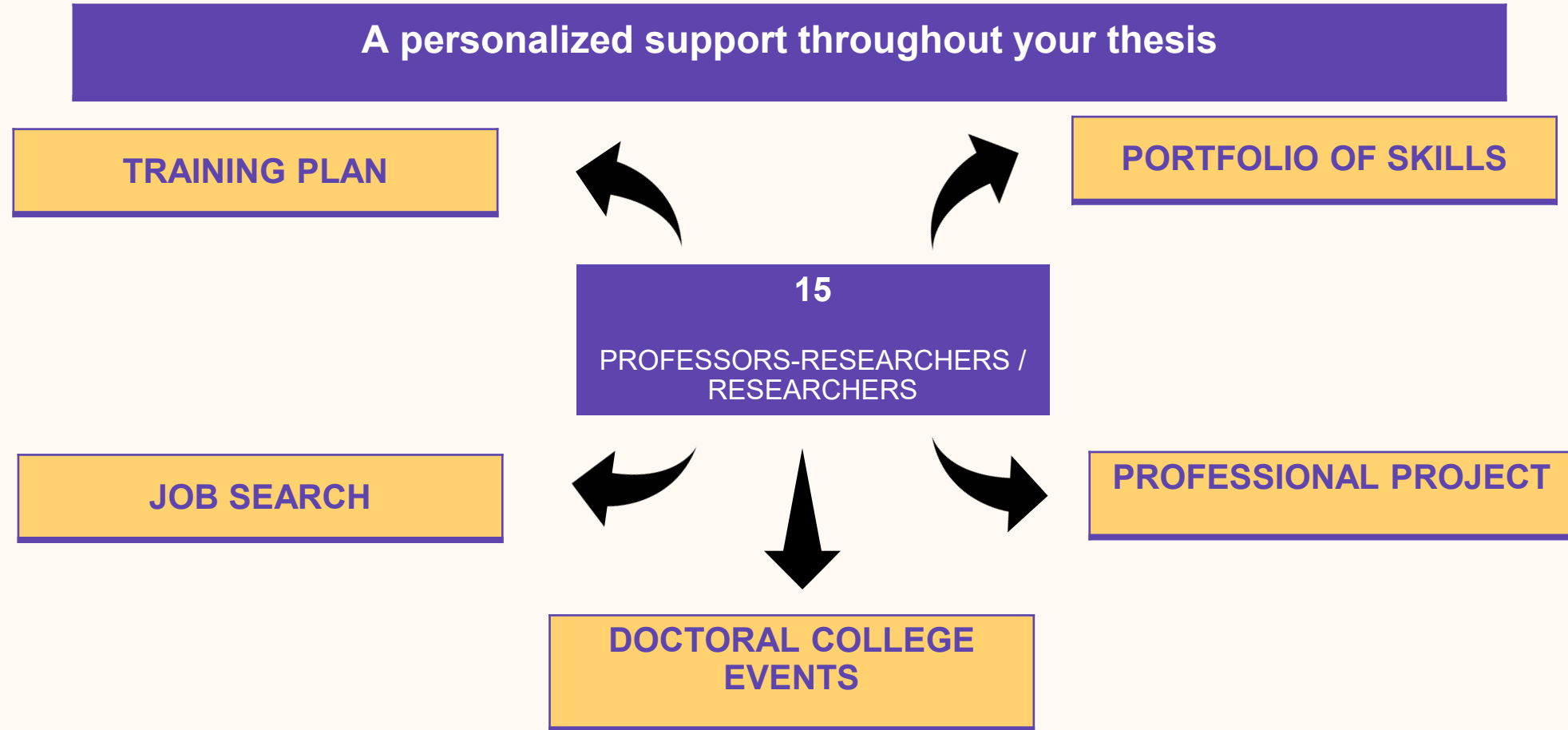


More informations :





# The network of career path advisors



# International

## International — Actions

### PhD Welcome

- ✓ Reception of international PhD students
- ✓ 1-day seminar on 25th january at the "Espace Inkerman".

### Thesis Prizes

- ✓ Theses completed in an international context (collaboration & international mobility)
- ✓ 2 thesis prizes per year of 2500€ 1S&T/ 1SHS



# Not - to - be missed events

International  
Actions



January, 23

Espace  
Inkerman  
Lille

Meet International PhD students  
Get practical informations

Have a nice time !

# INTERNATIONAL PhD WELCOME! 2025

Speakers  
Round tables  
Networking  
Ice breakers

**Thursday, January 23<sup>rd</sup> 2025**

From 9 AM to 4.30 PM  
Espace Inkermann Châtillon, Lille

**REGISTRATION REQUIRED**



Send the completed form to  
[euraxess@univ-lille.fr](mailto:euraxess@univ-lille.fr)

 **Université  
de Lille**

 **euraxess**  
RESEARCHERS IN MOTION

**Collège  
Doctoral**  
Université de Lille

# How to participate ?

Les formations doctorales professionnelles

[www.adum.fr](http://www.adum.fr)

PhD Job Day

[www.phdjobday.eu](http://www.phdjobday.eu)

Events

<https://doctorat.univ-lille.fr/college-doctoral/>

Site internet



Social Media



@Collège Doctoral  
de l'Université de Lille



@CDoctoralULNF



Collège Doctoral Lille  
- Nord de France



# Consulid



**Céline  
Ouchen**



consulid

PhD student

Project manager

Consulid

# Consulid

Depuis Janvier 2021 : adossement au collège doctoral

Accompagnement par un consultant sénior

5 doctorants au bureau de Consulid, expert.es dans divers domaines



Ambre  
Psychologie



Marine  
Psychologie



Camille  
Sciences de  
l'éducation



Céline  
Droit



Zahra  
Sciences de  
l'ingénieur

# Consulid

Contact :

consulid@univ - lille.fr

<https://consulid.univ - lille.fr>

Rejoignez - nous sur les réseaux sociaux !



@Consulid



# International thesis awards

**Sébastien  
Sanges**

EG BSL

# My PhD around the world

- Dr Sébastien SANGES
- 17 Dec 2024

# A little bit about me

Sébastien SANGES , 37 years old

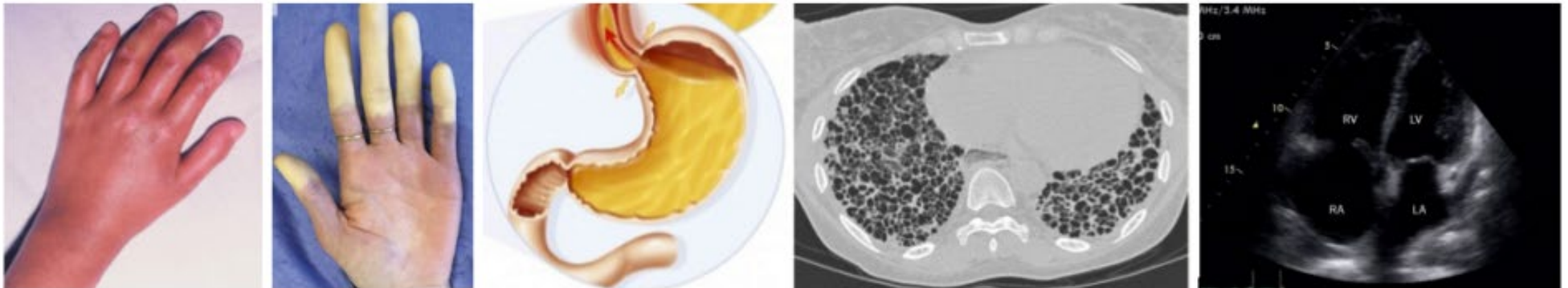
- Assistant Professor of Clinical Immunology, Lille University (2021)
- PhD in Basic Immunology (2023)
- 2 rotations in US labs:
  - *Boston University* , Prof. La fya tis (2015 - 2016)
  - *Stanford University* , Prof. Nic o lls & Prof. Chung (2022 - 2023), Fulbri ght scholarship
- Area of research: interactions between immunity and the vascula ture, especially in systemic sclerosis



# A little bit about my PhD

## Systemic sclerosis (SSc)

- A rare (30 - 300 cases/million) but potentially severe disease
- Vast heterogeneity between patients
- A major complication: pulmonary hypertension



# A little bit about my PhD

## Pulmonary hypertension

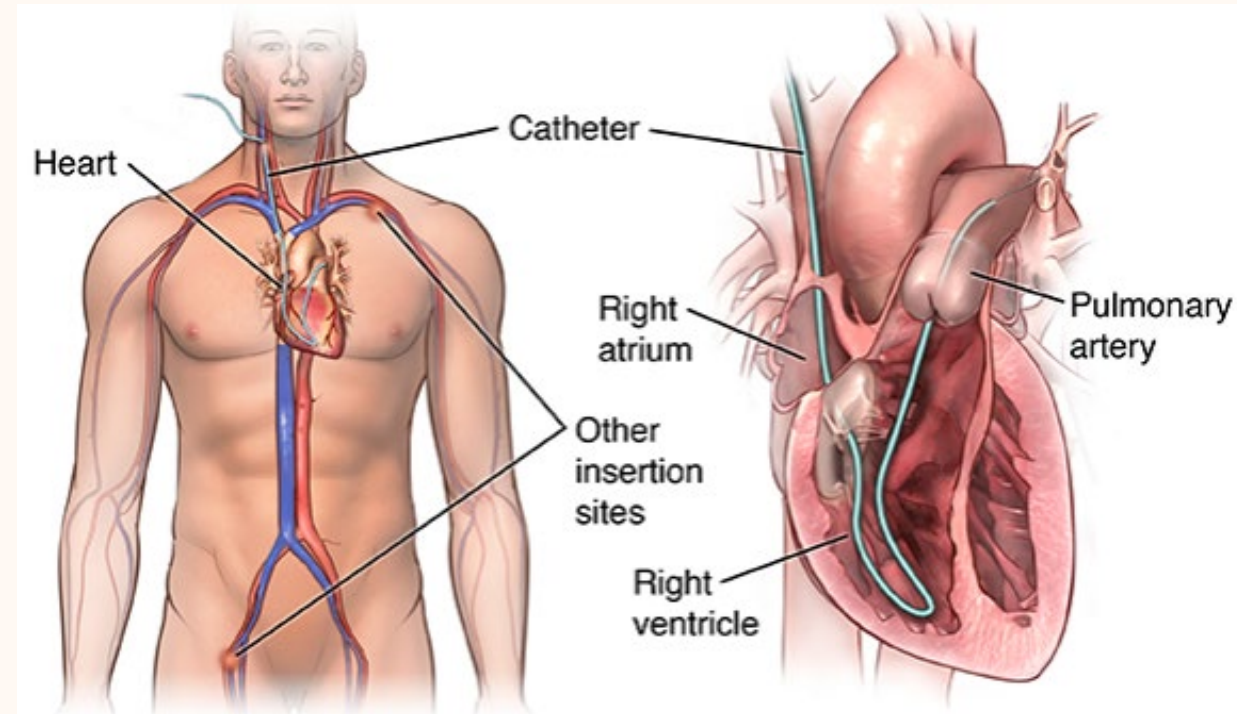
Diagnosed using an invasive exam: right - heart catheterization (RHC)



Can we find blood markers that could « replace » RHC ?



Can these biomarkers help us understand how the disease works...and how to treat it?



# A little bit about my experience abroad





# A little bit about my experience abroad



**BOSTON  
UNIVERSITY**

***Prof. R. Lafyatis***

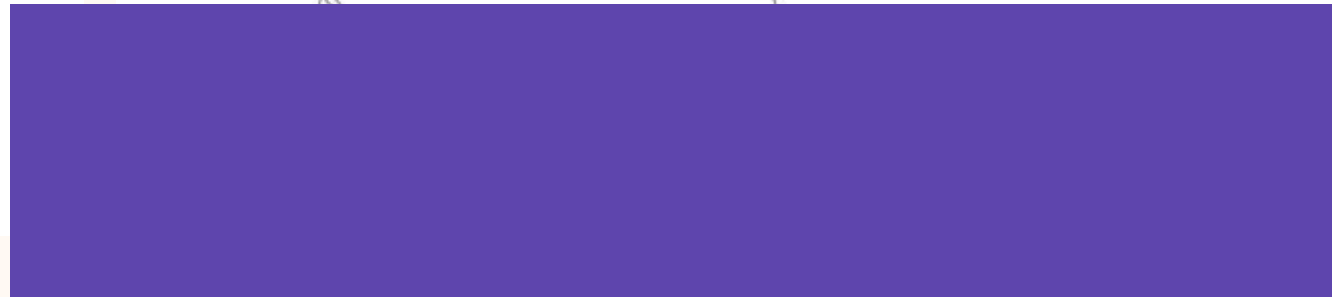
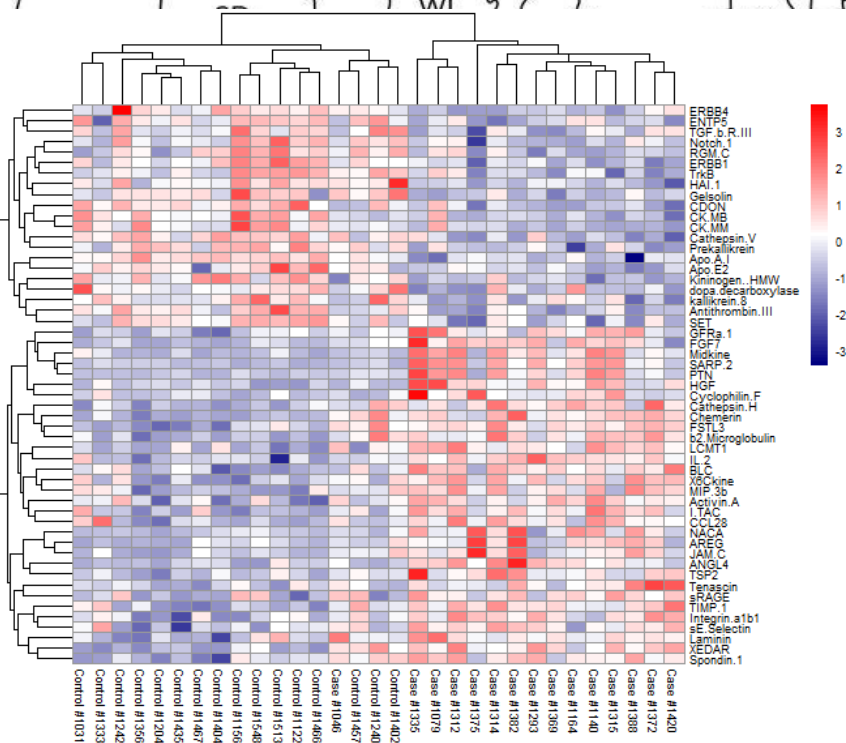
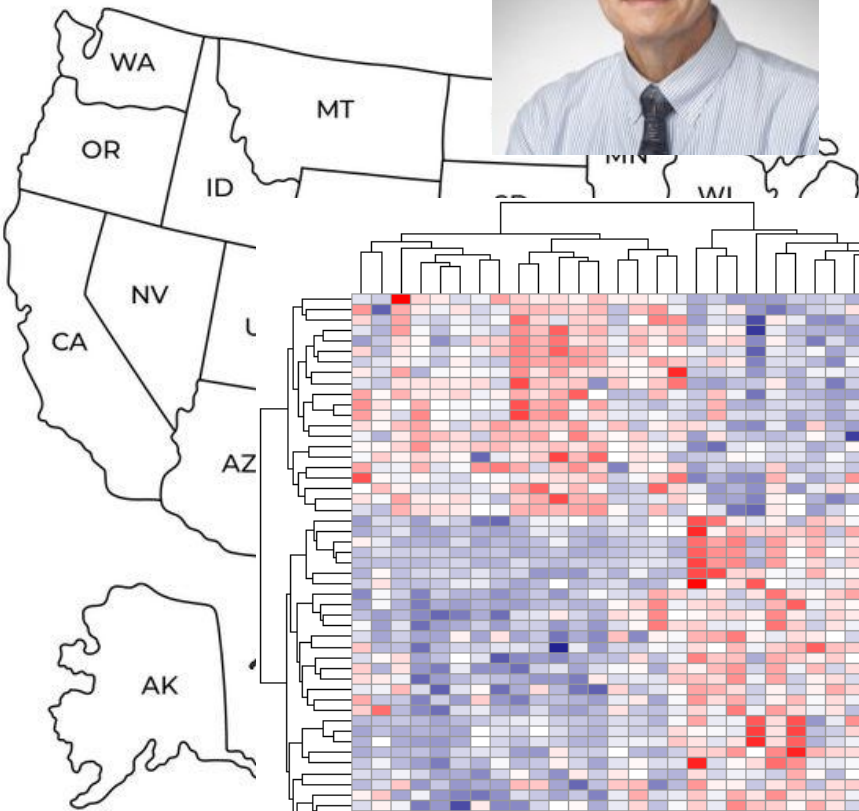


# A little bit about my experience abroad



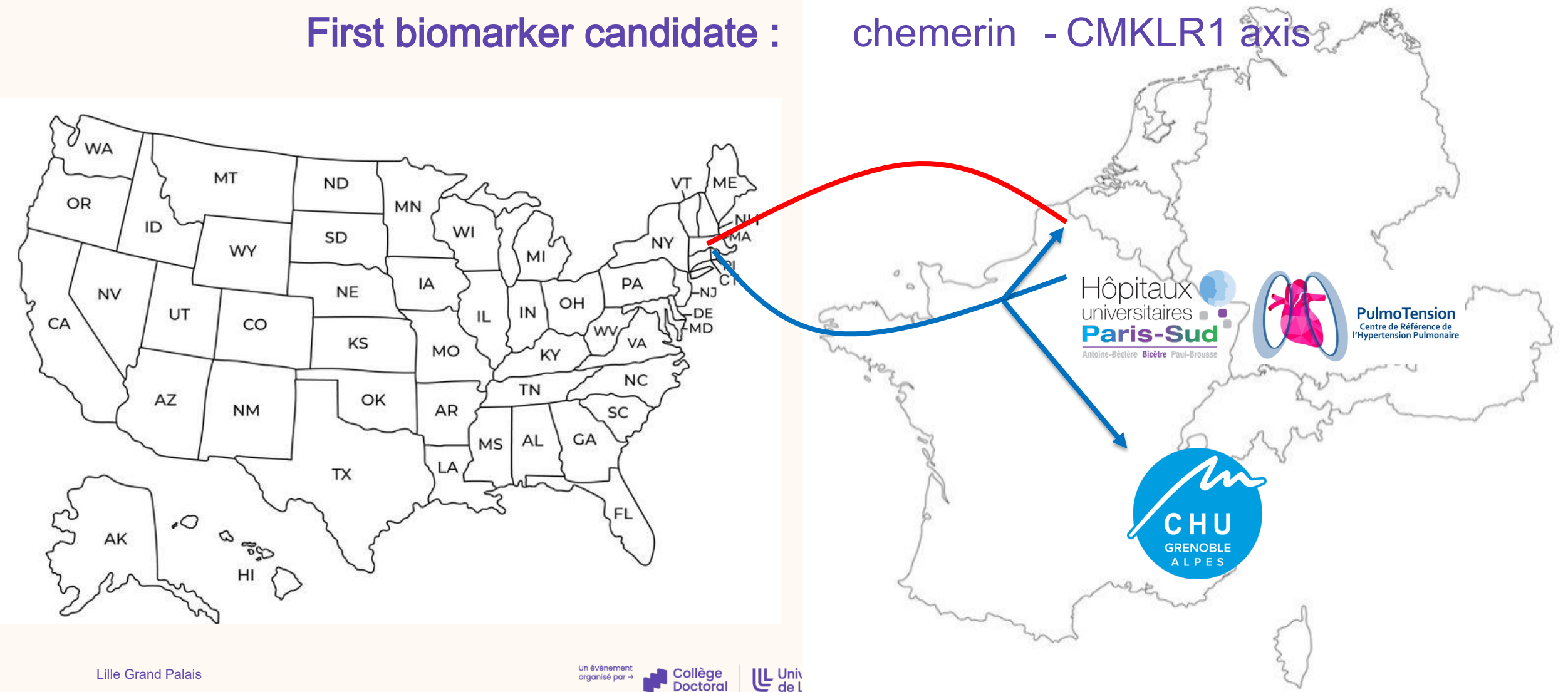
BOSTON  
UNIVERSITY

*Prof. R. Lafyatis*



# A little bit about my experience abroad

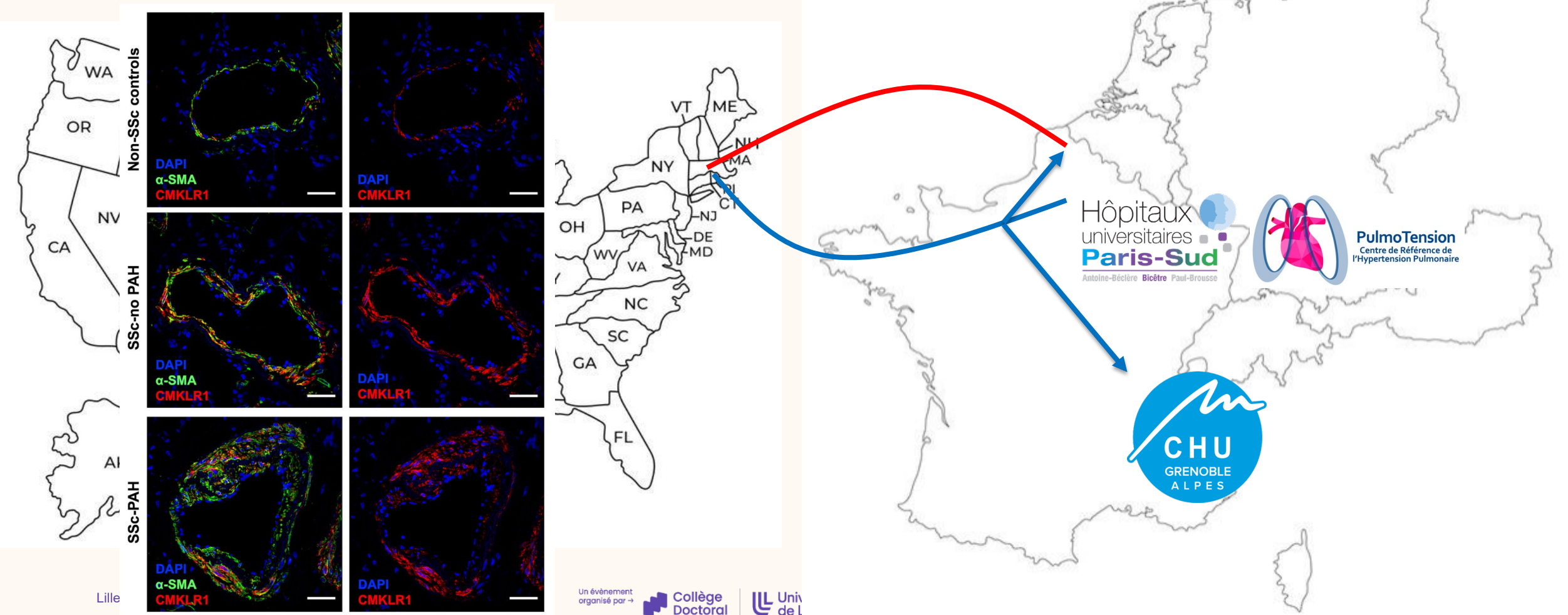
First biomarker candidate : chemerin - CMKLR1 axis





# A little bit about my experience abroad

First biomarker candidate : chemerin - CMKLR1 axis





# A little bit about my experience abroad

First biomarker candidate : chemerin - CMKLR1 axis

Systemic sclerosis

TRANSLATIONAL SCIENCE

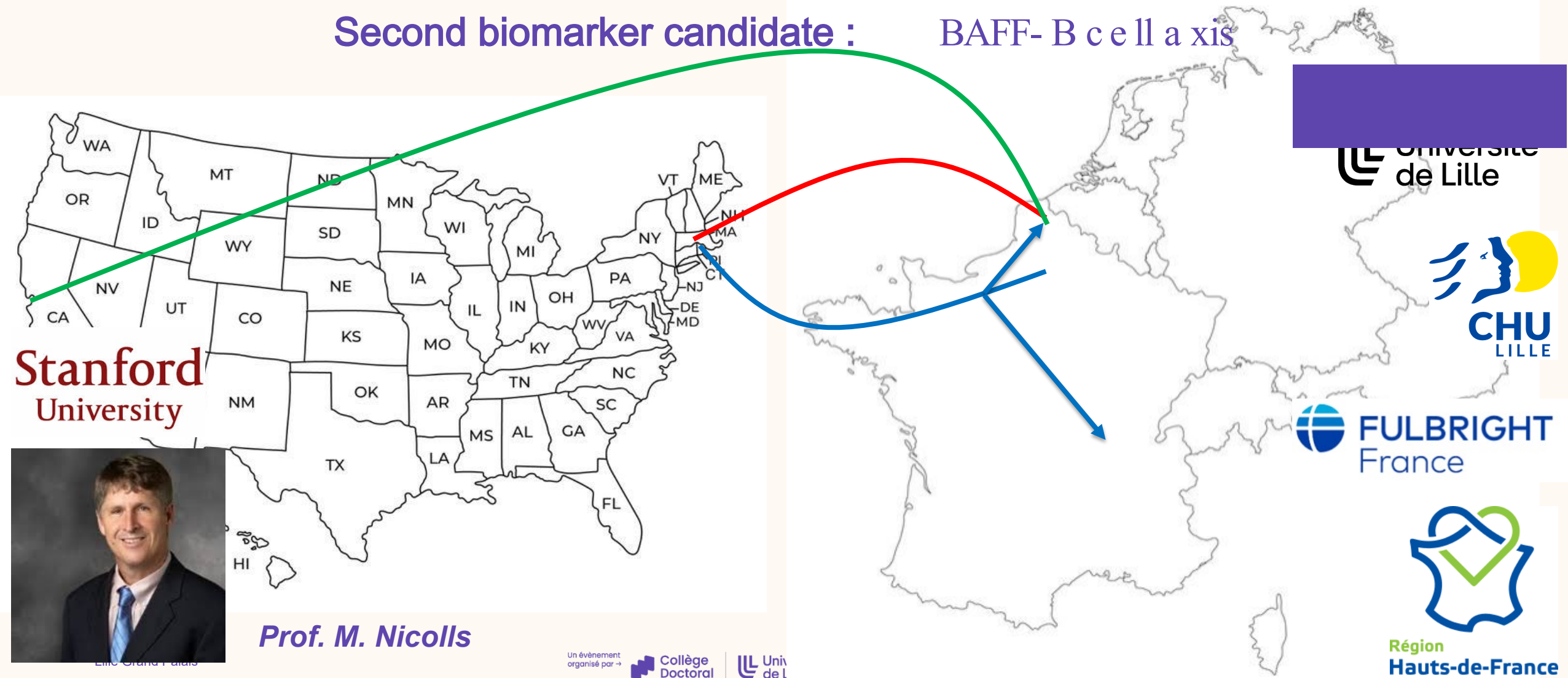
Biomarkers of haemodynamic severity of systemic sclerosis-associated pulmonary arterial hypertension by serum proteome analysis

Sébastien Sanges <sup>1,2,3,4,5,6</sup> Lisa Rice,<sup>1</sup> Ly Tu,<sup>7,8</sup> Eleanor Valenzi <sup>9</sup>  
Jean-Luc Cracowski,<sup>10</sup> David Montani <sup>7,8,11</sup> Julio C Mantero,<sup>1</sup> Camille Ternynck,<sup>12</sup>  
Guillemette Marot,<sup>12,13,14</sup> Andreea M Bujor,<sup>1</sup> Eric Hachulla <sup>2,3,4,5,6</sup>  
David Launay,<sup>2,3,4,5,6</sup> Marc Humbert,<sup>7,8,11</sup> Christophe Guignabert,<sup>7,8</sup> Robert Lafyatis<sup>15</sup>



# A little bit about my experience abroad

Second biomarker candidate : BAFF- B c e l l a x i s

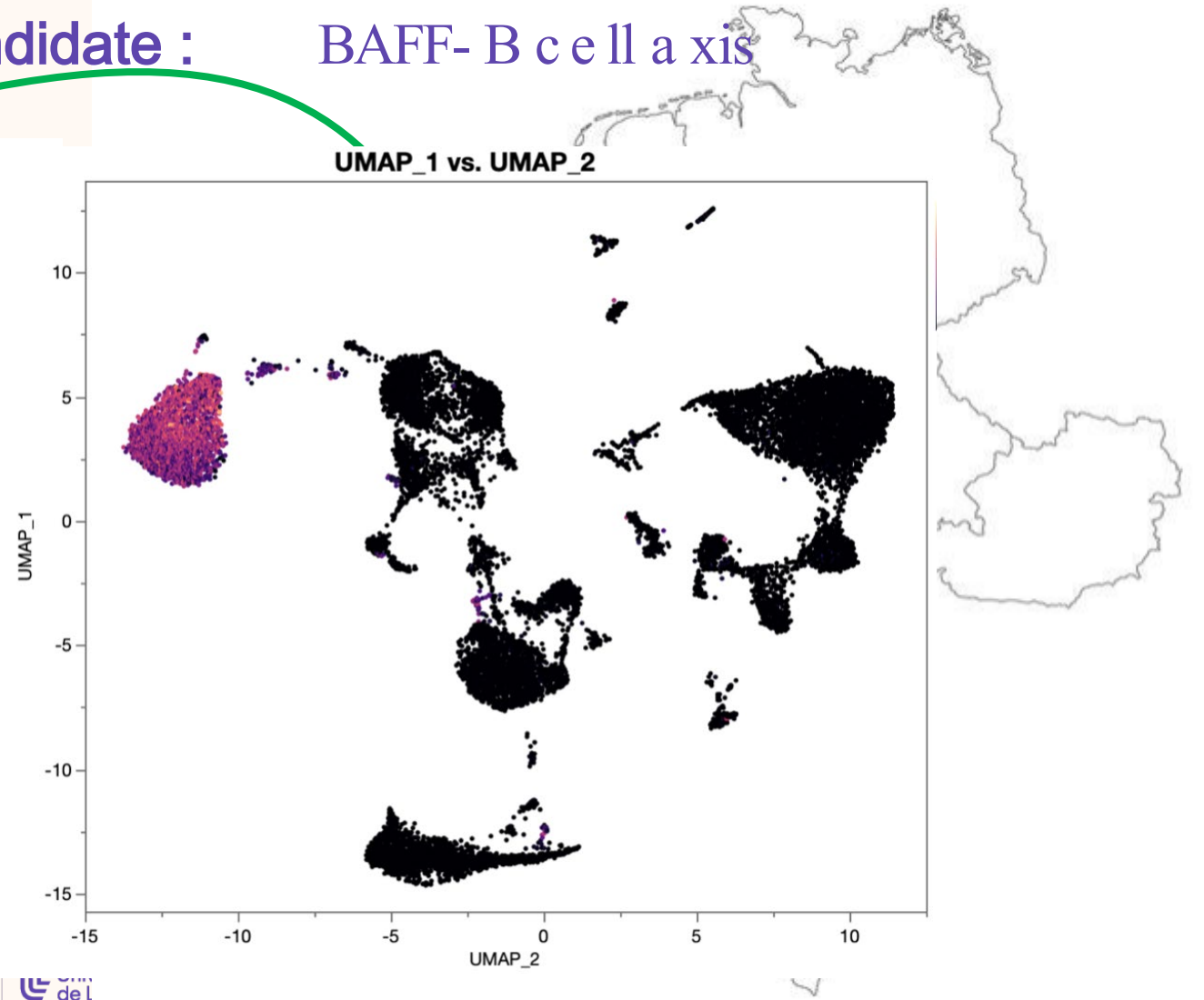




# A little bit about my experience abroad

Second biomarker candidate :

BAFF- B c e l l a x i s



*Prof. M. Nicolls*

# A little bit about my experience abroad

Second biomarker candidate : BAFF- B c e l l a x i s



EUROPEAN RESPIRATORY JOURNAL  
REVIEW  
S. SANGES ET AL.



B-cells in pulmonary arterial hypertension: friend, foe or bystander?

Sébastien Sanges<sup>1,2,3,4,5,6,7,9</sup>, Wen Tian<sup>6,7,9</sup>, Sylvain Dubucquoi<sup>1,2,8</sup>, Jason L. Chang <sup>6,7</sup>, Aurore Collet<sup>1,2,8</sup>, David Launay <sup>1,2,3,4,5,6,7,10</sup> and Mark R. Nicolls <sup>6,7,10</sup>

*Prof. M. Nicolls*

Un événement  
organisé par →

Collège  
Doctoral

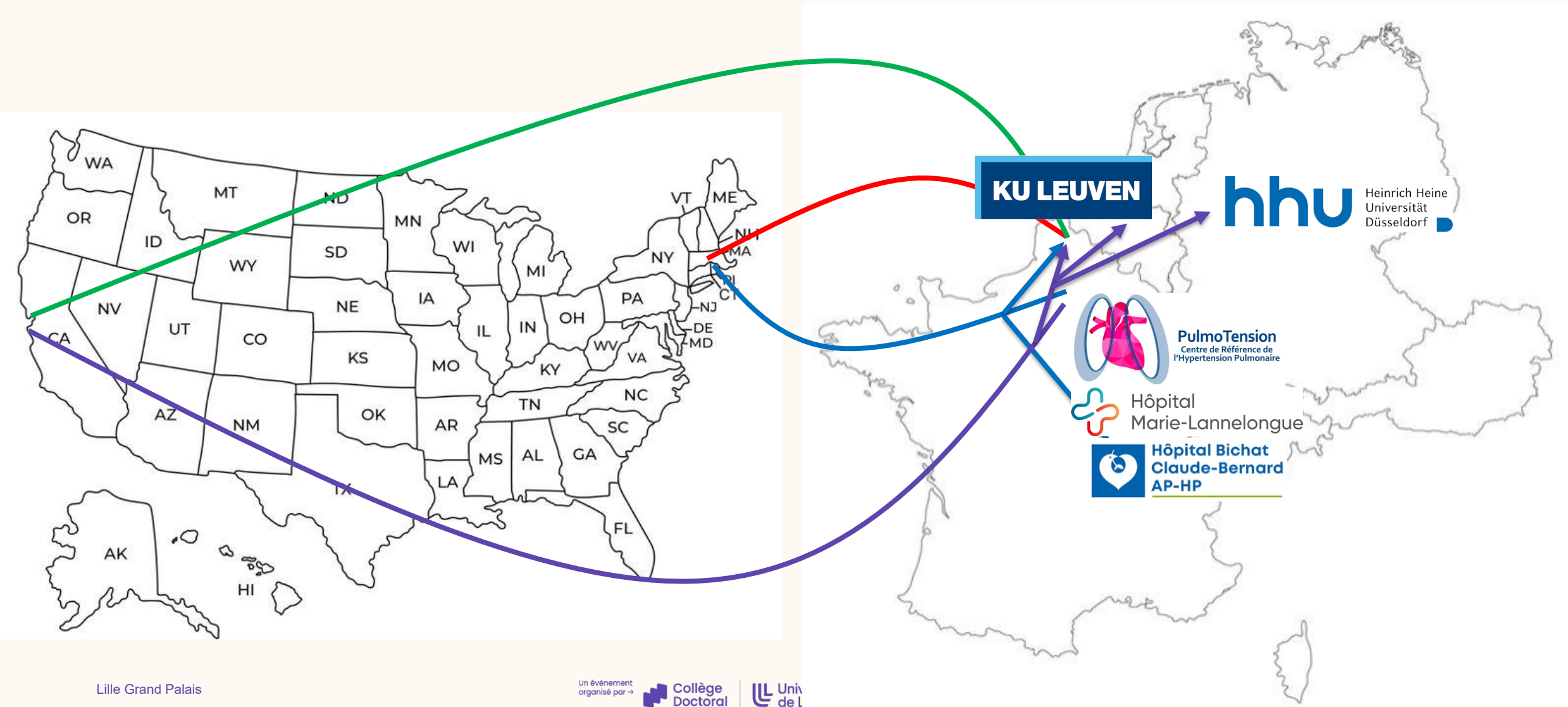
Univ  
de L



Stanford  
University



# A little bit about my experience abroad





# Why these experiences are valuable

- Scientific collaborations (exchange of samples and data)
- Acquisition of skills and knowledge
- Immersion in a different culture: scientific - but not only!
- Language skills and practice
- Connections, international visibility

# International thesis awards

**Patrick  
Vermersch**

Director of the graduate school  
“BSL”



À L'ORDRE DE **Sébastien Sanges**

À Lille

DATE 17 Déc. 2024

THÈSE Intérêt de biomarqueurs immunologiques dans l'hypertension  
artérielle pulmonaire associée à la sclérodermie systémique

€

2500



Biologie Santé de Lille

PRIX DE THÈSE

Recherche internationale 2024

Sciences et techniques

| :202412171: | 71420360 3651



# International thesis awards

**Maïlys  
Mangin**

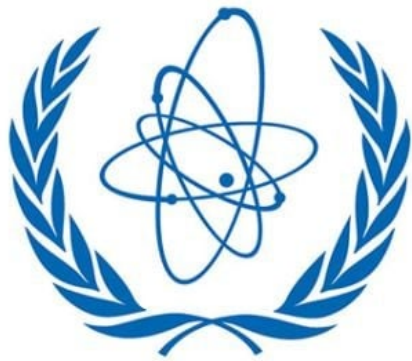
EG SJPG





AN INTERNATIONAL  
RESEARCH ON THE  
IAEA  
from Lille  
to Vienna





# IAEA

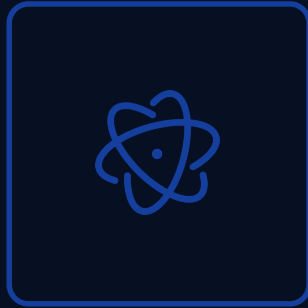
International Atomic Energy Agency

*Atoms for Peace and Development*



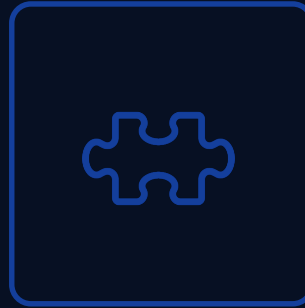


# MY DISSERTATION IN A NUTSHELL



## Research question

What role has the IAEA played in contemporary non-proliferation crises?



## Puzzle

How did a relatively small international organization come to occupy such a prominent position in international security crises?



## Dissertation Objective

Explain the trajectory of an international organization over time and through geostrategic transformations

This dissertation explores the pivotal role played by the IAEA in upholding global security and nuclear non-proliferation objectives.

# SOME RESULTS

A methodology to analyze the interactions between political space and technical and scientific space



A technical organisation...



... in a (highly) political environment

# AN INTERNATIONAL FIELDWORK



The Vienna  
International  
Center,  
headquarter of the  
IAEA



# AN INTERNATIONAL FIELDWORK



Several stays in Washington D.C.  
for interviews with US officials

# AN INTERNATIONAL FIELDWORK



Three years fellowship at  
the Belfer Center for  
Science and International  
Affairs,  
Harvard Kennedy School





# ASSISTANT PROFESSOR IN POLITICAL SCIENCE

University Toulouse Capitole

ASSOCIATE RESEARCH  
AT ÉCOLE NORMALE  
SUPÉRIEURE (CIENS)





A graphic on the left side of the slide features four yellow rectangular boxes stacked vertically, each containing a word in bold, dark blue, sans-serif capital letters. The words are 'REIMAGINING', 'NUCLEAR', 'ARMS', and 'CONTROL'. The background of this graphic consists of several concentric, light green circles on a dark blue background. A small, stylized pen is shown drawing a dashed line that forms a circle, and a small, stylized mountain range is visible on the right side of the graphic.

# **REIMAGINING NUCLEAR ARMS CONTROL**

TRACK 2 DIPLOMACY  
MEETINGS

# International thesis awards

**Gaël  
Chantepie**

Director of the graduate school  
“SJPG”



À L'ORDRE DE **Mailys Mangin**

À Lille

DATE 17 Déc. 2024

THÈSE La conversion de l'AIEA à la lutte contre la prolifération nucléaire.  
Une internationalisation tactique des jeux gouvernementaux  
nord-américains d'Atoms for Peace aux sanctions contre l'Iran

€

2500



Sciences Juridiques, Politiques et de Gestion

PRIX DE THÈSE

Recherche internationale 2024

Sciences Humaines et Sociales

| :202412171: | 71420360 3651



# What's next ?



**Frédéric  
Luginsland**

Administrative Officer  
of the Doctoral College

# Program

16:00 to 18:00

## Opening of the Graduate Schools

BSL • salle 2.3 —Biology and Health of Lille

ENGSYS • salle 3.4 —Engineering and Systems Science

MADIS • salle 3.5 —Mathematics, Digital Sciences and their Interactions

SESAM • salle 2.1—Economic, Social, Planning and Management Sciences

SHS • salle 2.2 —Social and Human Sciences

SJPG • salle 3.3 —Legal, Political and Management Sciences

SMRE • salle 3.6 —Sciences of Matter, Radiation and Environment

16:30 to 18:00

A time for discussion  
with the thesis directors  
Amphi Pasteur

18:00

## Networking and stands

Stands : Collège Doctoral · Consulid · Créinnov · Pépite Lille HDF · Maison de la médiation · Maison Internationale  
Euraxess · Les sciences infusent · Service Commun de la Documentation · Xperium · IEEE · Bio Addoct · MGEN · ADSL ·  
MESHS · ADDPL

# Stands

## The Doctoral College

Professional coaching for PhD students, career development.

## Consulid

Find out how to make the most of your skills as a doctoral student through consultancy assignments, providing practical solutions to the problems encountered by companies.

## Créinnov

The University of Lille's incubator dedicated to support research - based startup projects.

## Pépité Lille HDF

It's possible to be a doctoral student and an entrepreneur! The PEPITE stand will be happy to give you information on the ways in which you can be made aware of and supported in becoming an entrepreneur during your doctoral studies.

## Maison de la médiation

From legal information to personalized listening (Accessing the law, putting people in touch, pacifying, avoiding abusive behavior)

## MGEN

The research is you. We're here for your health!

## Maison internationale

The one - stop shop for international students at the University of Lille.

## Les sciences infusent

A scientific outreach programme to raise awareness of your research in society. Les sciences infusent supports you in promoting your research results to a wide range of target audiences, with a biannual programme, a variety of tools and flagship events such as the Fête de la science!

## Service Commun de la Documentation

Get your Science Ouverte passport and embark with the libraries and learning center for the adventure of your thesis.

## Xperium

Xperium is a showcase for the research carried out in the laboratories of the University of Lille. Each 2 year season is themed. The current theme is the link between science, sport and society. The activities, which are aimed at a wide range of audiences, are run by paid doctoral students, and all contributions are welcome!

## MESHS

It is a federation of research projects and programmes whose primary objectives are to structure, develop and decompartmentalise research in the humanities and social sciences (HSS) in the Hauts - de - France region.

## IEEE

We are a student association associated with the IEEE scientific journal. Our aim is to liven up scientific life in Lille by organising conferences with researchers from all over the world, seminars and various social events.

## Bio Addoct

Association of PhD students of the Doctoral School BSL " Biology and Health of Lille".

## ADSL

Association of doctoral students from EG SMRE, ENGSYS and MADIS. The idea is to enable PhD students to get together once a month to take their minds off their PhDs and talk to each other. The association also aims to act as an informal link between doctoral students and their respective EG, providing advice and support where needed.

## ADDPL

An association dedicated to doctoral students at the CRD&P, created to promote and enhance their research while fostering a spirit of solidarity and sharing. It offers doctoral students a place to present their work, share their thoughts and exchange ideas in a multi - disciplinary and supportive environment, notably through biannual meetings followed by convivial get - togethers.

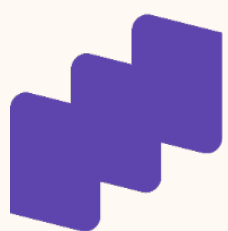
## Euraxess

Welcoming together our international researchers.



# Thanks for your attention





Collège  
Doctoral



Université  
de Lille

Université de Lille  
Campus Flers - Château  
365 bis Rue Jules Guesde - Bât A  
59658 Villeneuve d'Ascq

college - doctoral@univ - lille.fr





